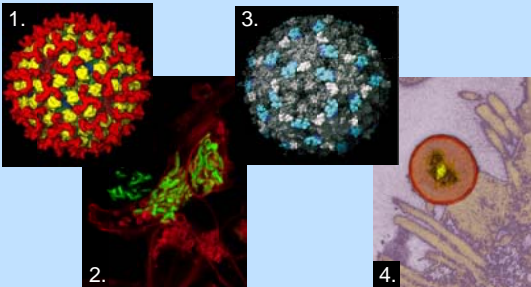


## Studentships at IAH: A summary

- *IAH is a world-leading centre for research on animal diseases*
- *Internationally recognized experts as Supervisors*
- *Unique research environment*
- *Register at prestigious universities*
- *3 or 4 year studentships*
- *First-class research facilities*
- *Journal clubs, seminars, group meetings*
- *Generic, transferable, skills programme*
- *Consumables budget*
- *Opportunities to present at national and international meetings*
- *Extensive international and industrial links*
- *On-site accommodation available*
- *Social Club and activities*



1. Bluetongue virus particle. 2. Confocal image of *Mycobacterium bovis* (*Bovine tuberculosis* (TB)) infecting a cell. 3. Foot-and-Mouth virus particle. 4. Enterohaemorrhagic *Escherichia coli* bacteria (red) adhering to cells lining the gut on raised 'pedestals'.

## Thinking about a career in research?

The Institute for Animal Health provides a unique training programme in infectious disease research leading to the award of a PhD or DPhil for high quality science and veterinary graduate students.

For further details go to our web page [www.iah.bbsrc.ac.uk/jobs\\_and\\_training.htm](http://www.iah.bbsrc.ac.uk/jobs_and_training.htm) or contact Dr Geoff Oldham, Head of Postgraduate Studies (see below).



**Contact: Dr Geoff Oldham**

Institute for Animal Health  
Compton, Newbury  
Berkshire  
RG20 7NN

Phone: (0) +44 1635 577 205

Fax: (0) +44 01635 577237

E-mail: [geoff.oldham@bbsrc.ac.uk](mailto:geoff.oldham@bbsrc.ac.uk)

INSTITUTE FOR ANIMAL HEALTH



# Opportunities for Postgraduate Research



## Study for a PhD at the Institute for Animal Health

### Institute for Animal Health

The **Institute for Animal Health (IAH)** is a world-leading centre for research on **infectious diseases of farm animals**. The Institute also has world-leading research groups studying the immunology of cattle and poultry. There are approximately 500 staff, students and visiting scientists at IAH.

The Institute has 2 laboratories:

The **Compton Laboratory** is based in the Berkshire Downs, approximately 20 miles south of Oxford. This site works primarily on endemic diseases and fundamental immunology of cattle and poultry.

The **Pirbright Laboratory** is based in Surrey, 6 miles from Guildford. The focus of research at the Pirbright is on 'exotic' viral diseases of cattle, sheep and pigs. These are diseases not normally present in the UK but which threaten UK agriculture.

The IAH provides **first class facilities** for its staff and students. These include: bioimaging equipment (confocal microscopes, transmission and scanning electron microscopes), nucleic acid and protein sequencing equipment, and cell analysers and sorters as well as animals of known disease and genetic status, and animal accommodation to enable infectious disease studies.

The IAH has extensive **links and collaborations** with researchers around the world and with a wide range of relevant industrial companies especially animal health pharmaceutical companies.

The IAH is sponsored by the Biotechnology and Biological Science Research Council (BBSRC).

### Studentships

The IAH normally has around 40 students studying for a PhD in its laboratories at any time with an annual intake of between 10 and 15 students.

#### Registration

Students will be registered at prestigious universities. This will normally be the University of the University-based supervisor.

#### Funding

Studentships at IAH are funded from a variety of sources. The BBSRC has awarded the IAH a Doctoral Training Grant which currently supports 6 studentships each year but we also receive support for studentships from industrial sponsors and the Institute also, on occasion, awards a limited number of studentships.

The Institute is also happy to welcome students with their own funding, this is usually through their national government or competitions organized by international charities (for example, the Association of Commonwealth Universities).

Students receive a generous consumables and travel allowance.

#### Applications

Details of currently available studentships can be found on our web page ([http://www.iah.bbsrc.ac.uk/jobs\\_and\\_training.htm](http://www.iah.bbsrc.ac.uk/jobs_and_training.htm)) and advertisements are placed with New Scientist ([www.newscientistjobs.com](http://www.newscientistjobs.com)) and on findaphd.com ([www.findaphd.com](http://www.findaphd.com)). The main call for applications is normally advertised in the winter prior to studentships starting the following October but studentships may appear at other times of the year.

### Eligibility

Guidance on eligibility for studentships at IAH is provided under 'How to Apply' on our web page ([http://www.iah.bbsrc.ac.uk/jobs\\_and\\_training.htm](http://www.iah.bbsrc.ac.uk/jobs_and_training.htm)) and further details are provided against the specific studentships when advertised.

### Training

Students will receive appropriate state-of-the-art project-specific training as part of their research programme. The Institute also provides a programme of generic skills training for its students that enhances their employment opportunities for a wide-range of career options.

### Supervision

All students will have a supervisory team consisting of a Principal and a Co-Supervisor based at IAH together with a University-based supervisor. Students are also assigned a personal tutor who is responsible for pastoral care. The Institute has a formal system for monitoring and assessing progress of the studentship for its duration.

### Other activities

The Institute provides a range of other activities as part of the academic environment for studying for a PhD. These include journal clubs, group meetings, attending seminars by external and IAH speakers and the periodically presenting their own work. Students are encouraged to present their work at national and international meetings.

### Accommodation and Social Activities

The Institute has on-site bed-sit accommodation available for rent by students. There is also a Social Club at each site with a range of associated clubs and activities.